

## Installation:

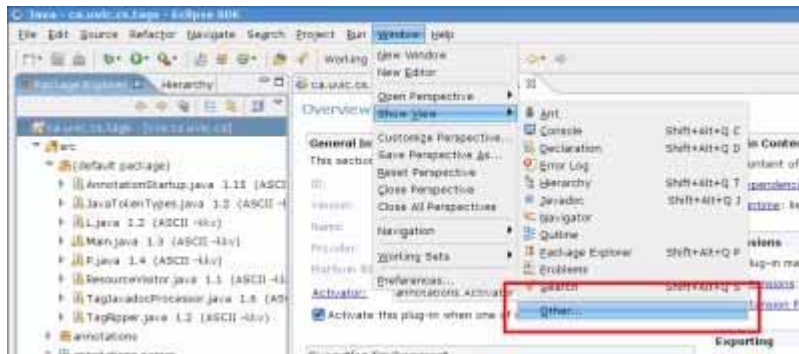
1. Download IDETag.zip and place it in your eclipse directory. Unzip IDETag.zip.
2. Make sure you have Java 1.5 installed
3. Ensure Eclipse is launched with Java 1.5 as the default. If you have more than one Java VM installed, make sure your eclipse.ini includes the following:

```
-vm  
/path_java_bin/java
```

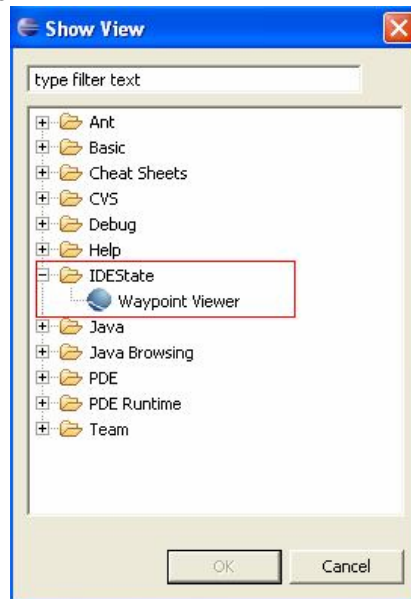
## Using IDETag:

The Waypoint View can be opened by selecting:

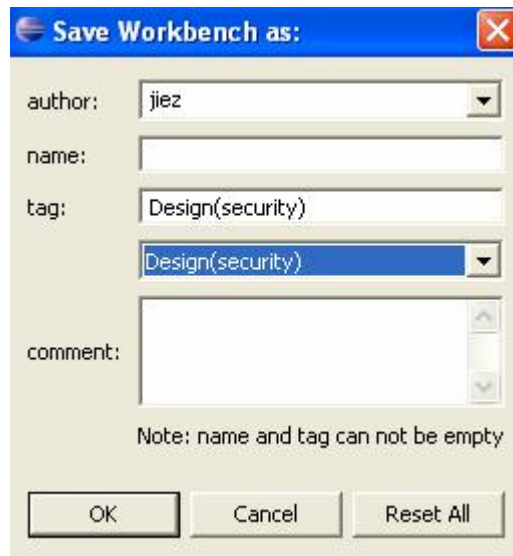
1. Window->Show View->Other



2. IDETag->Waypoint View



3. When saving the Eclipse window as a waypoint, it has to be associated with a Tag. The tag name may be nested through the use of brackets: **Design (security)** and it's auto-complete supported.



**Save Workbench as:**

author:

name:

tag:

comment:

Note: name and tag can not be empty